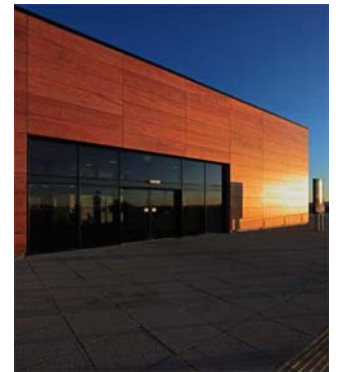


## Project Profile

<b>Project Description:</b>	<b>New Indoor Soft Play &amp; Skateboard Park</b>
<b>Location:</b>	<b>East Kilbride, Scotland</b>
<b>Client:</b>	<b>Graymack Limited</b>
<b>Project Value:</b>	<b>£1.5M</b>
<b>Project Duration:</b>	<b>December 2009 – June 2010</b>
<b>Sector:</b>	<b>Leisure</b>



Callidus Design Limited was appointed by Graymack Limited to carry out the mechanical & electrical building services design for a new indoor soft play area and skate park within an existing sports leisure park (Playsport) in East Kilbride, Scotland. The leisure park also contains a tennis complex, five-a-side football pitches, a health & fitness suite, a 2 tier golf driving range, 9 hole championship tribute course and golf academy. The overall area occupied by the skate park and soft-play area is approximately 3,330m<sup>2</sup> with a roof height of approximately 10m. An amenity block serving both the skate park and the soft play area is located centrally within the facility and incorporates all customer toilets, staff room, office space, party rooms and a cafe kitchen.

CDL were commissioned to undertake the design of the following services:

- Above ground drainage installation
- Natural gas installation
- Ventilation/HVAC installation
- Lighting installation
- Small power installation for all HVAC Services
- Controls installation